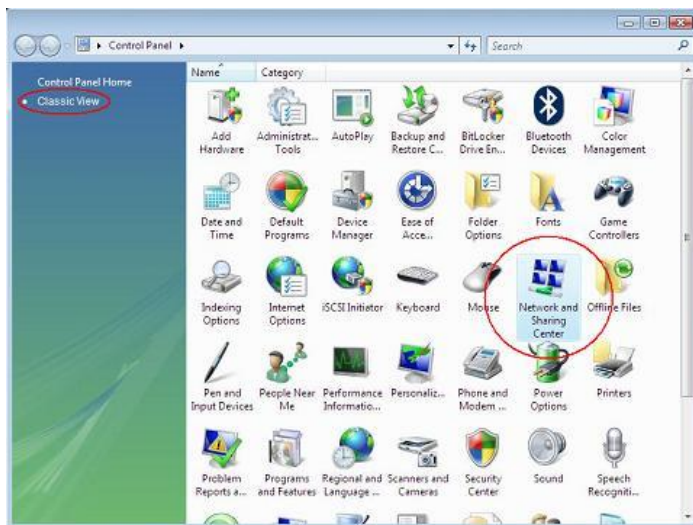


1. Go to **start**

2. Select **Control Panel**



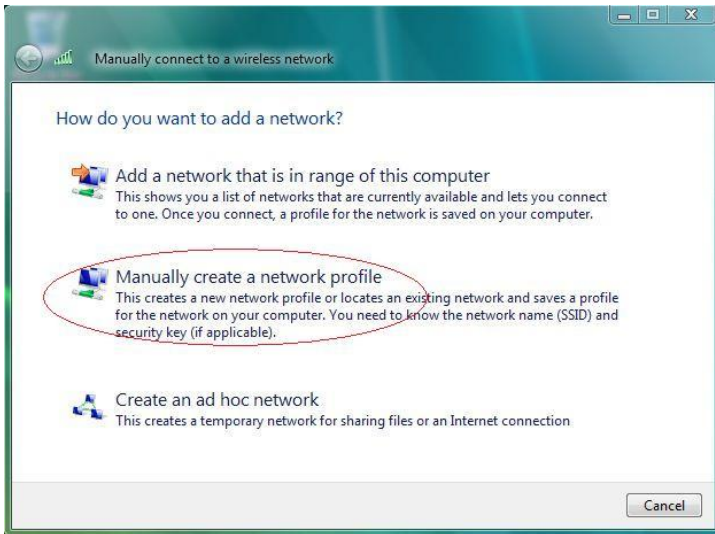
3. On the right hand side of the screen select **classic view**. Then Select **network and sharing center**.



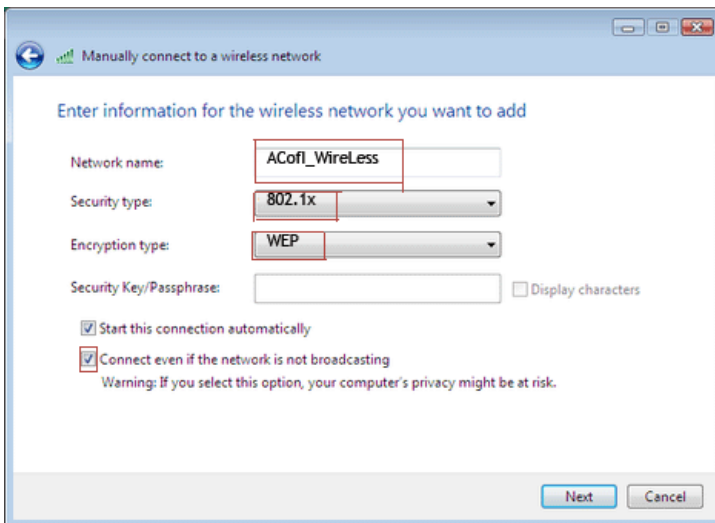
4. On the upper right, click on **Manage Wireless Networks**



5. Click on **Add**



6. Click on **Manually create a network profile.**



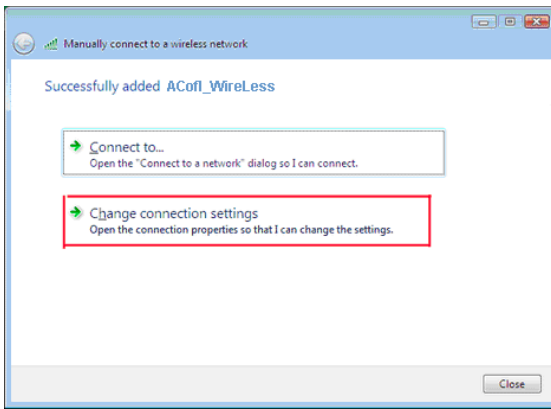
7. Fill in the boxes with the following information:

Network name: **ACofl_WireLess** (A, C, I, W, L are all capitalized).

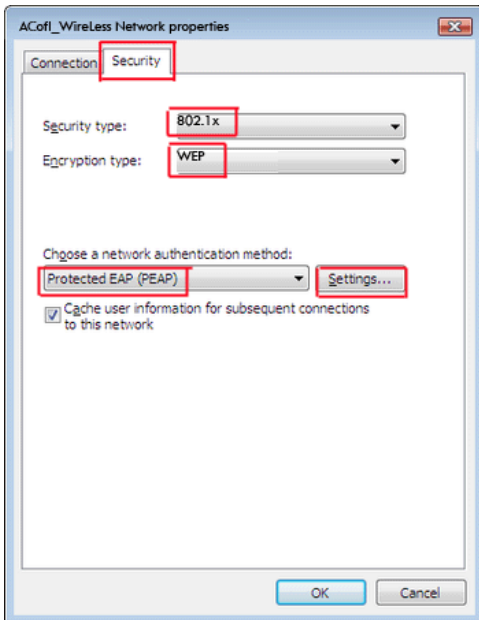
Security type: **802.1x**

Encryption type: **WEP**

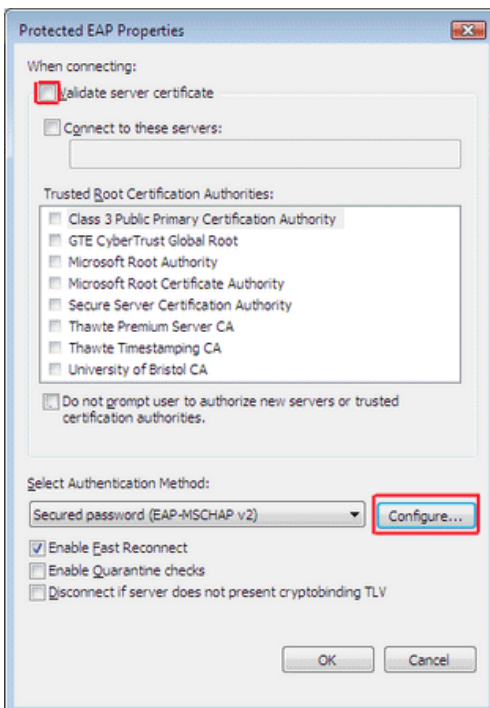
Check "**Connect even if the network is not broadcasting**" click on "**Next**"



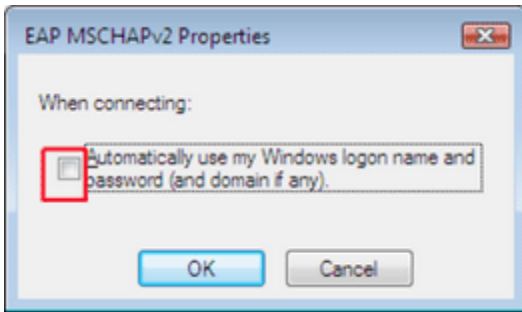
8. Window should come up saying "Successfully added ACofl_WireLess", click on "Change connection settings" a window should pop up saying "ACofl_WireLess Network properties".



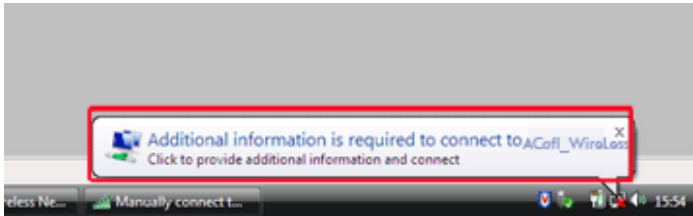
9. Click on the "Security" tab. Make sure Security type says "802.1X" and Encryption type says "WEP". The line that says "Choose a network authentication method:" you will need to select Protected EAP (PEAP), then click "Settings" button.



10. You should now have another window that says "Protected EAP Properties". Under "When connecting:" You will need to uncheck "Validate server certificate", make sure there is no check mark on the field. Under "Select Authentication Method:" you need to select "Secured password (EAP-MSCHAP v2)" then click on "Configure".

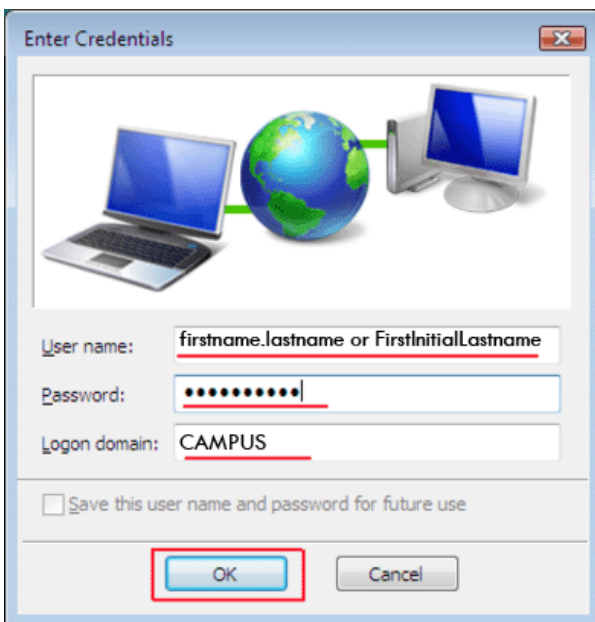


11. You should now have another window that says "**EAP MSCHAPv2 Properties**", **uncheck** the box that says 'Automatically use my Windows logon name and password (and domain if any)'. Note: if a college owned laptop don't uncheck. Then click "**OK**"



12. Click on "**OK**", Click on "**OK**", Click on "**Close**"

13. A balloon will pop up that says **additional information is required to connect to ACofl_WireLess**. **Double click** on the balloon.



14. A window will open that says **Enter Credentials**. You will enter the information that you use to log on to a school computer.
User Name: firstname.lastname or FirstInitialLastName
Domain: Campus.
Click "**OK**"

15. After entering this another window will pop up asking about "Credential manager Single Sign On" You can either click "**Yes**" or "**No**".

You should now be connected to the ACI Wireless network.